

PLACES TO STAY LONGVILLE LODGING LISTINGS

	Housekeeping	Number of Rooms	Kitchen Facilities	Handicap Accessible	Fireplace	Laundry	Pets	Groceries/Ice	Pool/Sauna	Camping	RV Hook-Ups	Dump Station	Shower House	Playground	Recreation Room	Wireless Internet	Satellite TV	Boat/Motor Rental	Pontoons	Open Dates	Range of Rates
42		7	•	•	•	•	•	•	•	•	•	•	•	•	•	•	•	•	•	All Year	\$445-\$1375
BIG SAND LAKE 700 acres Bluegills, Northern Pike, Crappies, Walleye, Large Mouth Bass, Rock Bass For map, visit www.Longville.com/lake-maps/big-sand-lake																					
Balsam Bay Resort Bob & Su Ugstad 6231 72nd Street NE, Remer, MN 56672 • balsambayresort.com 218-566-2346 • BalsamBayResort@gmail.com																					
43		10	•	•	•	•	•	•	•	•	•	•	•	•	•	•	•	•	•	All Year	\$770-\$2990
BOY LAKE 3145 acres Muskies, Northern Pike, Walleye, Large Mouth Bass, Crappies, Sunfish, Perch, Bullheads For map, visit www.Longville.com/lake-maps/boy-lake																					
Timber Trails Resort Tom & Kathy Marnik 3014 S. Boy Lake Drive NE, Remer, MN 56672 • TimberTrailsResort.com 218-566-2376 • Kathy@timbertrailresort.com -SEE AD ON PAGE 12																					
45																					\$20-\$150
GIRL LAKE 384 acres, part of 5500-acre Woman Lake Chain Walleye, Muskies, Large Mouth Bass, Northern Pike, Sunfish, Crappies, Perch For map, visit www.Longville.com/lake-maps/girl-lake																					
Longville Campground Gregg & Noel Towley P.O. Box 404, 1367 County Rd 5, Longville, MN 56655 218-363-2610 • Longville.Campground@gmail.com																					
46		10	•	•	•	•	•	•	•	•	•	•	•	•	•	•	•	•	•	All Year	\$795-\$950
Long Birch Lodge Nathan & Mandy Tabaka P.O. Box 166, Longville, MN 56655 • longbirchlodge.com 218-363-2371 • 800-722-0027 • vacation@longbirchlodge.com -SEE AD ON PAGE 13																					
47		7	•	•	•	•	•	•	•	•	•	•	•	•	•	•	•	•	•	All Year	\$575-\$1750
Pine Ridge Resort Karl & Elizabeth Martin 1056 Sarajac Road NE, Longville, MN 56655 • pineridgeresort.com 218-363-2828 • 800-972-0147 • info@pineridgeresort.com																					
LAKE INGUADONA 1272 acres Muskies, Walleye, Northern Pike, Large and Small Mouth Bass, Perch, Sunfish, Bullhead For map, visit www.Longville.com/lake-maps/lake-inguadona																					
48		2	•	•	•	•	•	•	•	•	•	•	•	•	•	•	•	•	•	All Year	call for rates
Anchorage Inn Jeff Knuf & Larry Gavin 2972 County 7 NE, Longville, MN 56655 • 218-363-2236 • Fax: 218-363-2014 jeffreyknuf@yahoo.com • larrygavin@yahoo.com -SEE AD ON PAGE 18																					
49		30	•	•	•	•	•	•	•	•	•	•	•	•	•	•	•	•	•	All Year	call for rates
LEECH LAKE 111,000 acres Muskies, Walleye, Northern Pike, Large and Small Mouth Bass, Crappies, Sunfish For map, visit www.Longville.com/lake-maps/leech-lake																					
Huddle's Resort Kay Huddle 1696 Whipbolt Beach Road NW, Walker, MN 56484 • www.huddlesresort.com 218-836-2420 • huddles@arvig.net -SEE AD ON PAGE 12																					
50		9	•	•	•	•	•	•	•	•	•	•	•	•	•	•	•	•	•	All Year	\$130-\$3000
Pikedale Lodge Torey & Sailey Myers 7995 Partridge Point Dr. NE, Longville, MN 56655 • www.pikedale.com 218-836-2232 • 800-279-1126 • bsmyers@pikedale.com																					
51		3	•	•	•	•	•	•	•	•	•	•	•	•	•	•	•	•	•	May-Sept	\$150-\$1400
Thielen's Rainbow Bay Resort Pete & Jan Thielen 3894 Little Boy Rd NE, Longville, MN 56655 612-590-2966 • 800-875-6386 • thielen665@yahoo.com																					
LONG LAKE 1271 acres Northern Pike, Walleye, Large Mouth Bass, Crappie, Bluegills For map, visit www.Longville.com/lake-maps/long-lake																					
52		4	•	•	•	•	•	•	•	•	•	•	•	•	•	•	•	•	•	All Year	call for rates
Camp O' My Dreams Motel on Long Lake Wilma Griffin 1534 Fahrholz Rd. NE, Longville, MN 56655 • www.camp-o-mydreams.com 218-363-2507 • wgriffin@arvig.net																					
53		16	•	•	•	•	•	•	•	•	•	•	•	•	•	•	•	•	•	All Year	\$97-\$952
Deer Trail Resort & Campground Rebecca Ryan, Manager 1608 Deer Run Dr NE, Longville, MN 56655 218-363-2536																					
PLEASANT LAKE 1089 acres Crappies, Bluegills, Northern Pike, Large and Small Mouth Bass, Sunfish, Pumpkinseeds, Perch For map, visit www.Longville.com/lake-maps/pleasant-lake																					
54		16	•	•	•	•	•	•	•	•	•	•	•	•	•	•	•	•	•	All Year	\$475-\$2708
Twin Springs Resort Jesse and Melissa Hirschert 3837 N. Pleasant Lake Dr. NW • Hackensack, MN 56452 800-279-5179 • twinsprings@tds.net • www.twinspringsresort.com																					
THUNDER LAKE 1330 acres Walleye, Crappies, Northern Pike, Large Mouth Bass, Perch For map, visit www.Longville.com/lake-maps/thunder-lake																					
55		6	•	•	•	•	•	•	•	•	•	•	•	•	•	•	•	•	•	5/1-10/15	\$750-\$2500
Thunder Lake Lodge Craig & Jamie Riendeau 5316 Cisco Lane NE, Remer, MN 56672 • thunderlakelodge.com 218-566-2378 • vacation@thunderlakelodge.com																					
WABEDO LAKE 1186 acres Muskies, Walleye, Northern Pike, Bass, Crappie, Bluegill For map, visit www.Longville.com/lake-maps/wabedo-lake																					
56		8	•	•	•	•	•	•	•	•	•	•	•	•	•	•	•	•	•	May-Jan	\$950+
Diamond Crest Resort, LLC Jerry & Maggie Motyl 2916 Diamond Crest Rd. NE, Longville, MN 56655 • www.diamondcrestresort.com (cell): 218-821-1364 • dcrestort1@gmail.com																					
57		15	•	•	•	•	•	•	•	•	•	•	•	•	•	•	•	•	•	4/14-11/15	\$775-\$4250
WOMAN LAKE 5502 acres Walleye, Muskies, Large Mouth Bass, Northern Pike, Sunfish, Crappies, Perch For map, visit www.Longville.com/lake-maps/woman-lake																					
All Seasons Resort Don & Dwayne Waldera (father & son) 3539 State Hwy 84 NE, Longville, MN 56655 • allseasonsresort.com • 218-363-2030 800-279-1128 • fx: 218-363-2030 • allseasons@arvig.net -SEE AD ON PAGE 3																					
58		9	•	•	•	•	•	•	•	•	•	•	•	•	•	•	•	•	•	May 1-Oct 31	\$735+
Broadwater Lodge Kim and Lori MacFarlane 4588 Timber Dr. NW, Hackensack, MN 56452 broadwaterlodge.com 218-682-2552 • fx: 218-682-2193 • relax@broadwaterlodge.com Manager: Darren Week -SEE AD ON PAGE 13																					
59		20	•	•	•	•	•	•	•	•	•	•	•	•	•	•	•	•	•	All Year	\$600-\$4500
Green Roof Lodge David and Tracy Smith 945 County Rd 5 NW, Hackensack, MN 56452 218-682-2399 • 855-682-2399 • greenrooflodge@tds.net • www.greenrooflodge.com																					
60		8	•	•	•	•	•	•	•	•	•	•	•	•	•	•	•	•	•	5/1-10/31	\$800+
Kee-Wee-Moo-Sha Resort Gary & Linda Knox Manager: Craig & Angie Nelson 4308 Timber Dr. NW, Hackensack, MN 56452 • womanlake.com • 218-682-2362 800-405-5667 • fx: 218-682-2362 • kmns@womanlake.com -SEE AD ON PAGE 13																					
61		19	•	•	•	•	•	•	•	•	•	•	•	•	•	•	•	•	•	5/1-10/31	\$650+
Minne Teepee Resort Jeff & Lori Burks 870 County 11 NW, Hackensack, MN 56452 • minneteepee.com 218-682-2485 • MinneTeepee@gmail.com -SEE AD ON PAGE 13																					
Woman Lake Lodge Jeff & Lori Burks 914 Cty 5, Hackensack, MN 56452 • www.womanlakelodge.com 218-682-2426 • 800-950-0032 • burks5@tds.net																					

DINING/BAR

14 Anchorage Inn Jeff Knuf
2972 County 7 NE
Longville, MN 56655
218-839-0847
knuffjeffrey@yahoo.com
www.anchorageinnmn.com
-SEE AD ON PAGE 18

71 BC's Corral on Mule Lake Brian Boeddeker
State Hwy 84 NW
Longville MN 56655
218-405-0323
brian.boeddeker@gmail.com
-SEE AD ON PAGE 26

17 Patrick's on Girl Lake Nathan Tabaka, Jeni Tabaka
PO Box 295 • Longville, MN 56655
218-363-2995
-SEE AD ON PAGE 19

FITNESS CENTER

22 Empowered Fitness Katie Daudt
PO Box 121 • 191 Hardy Lane
Longville, MN 56655
Katie.Daudt@empoweredupnorth.com
www.empoweredupnorth.com
-SEE AD ON PAGE 20

GROCERY

18 Tabaka's Family Foods Lisa Tabaka
PO Box 298 • Longville, MN 56655
218-363-2303 • TabakaSV@arvig.net
-SEE AD ON PAGE 15

ICE CREAM SHOP/DINING

16 Frosty's Greg and Dawn Gilsrud
1485 County Rd 5 • PO Box 123
Longville, MN 56655
218-363-2299
-SEE AD ON PAGE 5

MEDICAL

21 Cuyuna Regional Medical Center-Longville Clinic Cindy Schmitz
180 Jordan Ln
Longville, MN 56655
218-363-3300 • Fax: 218-363-2233
cindy.schmitz@cuyunamed.org
www.cuyunamed.org
-SEE AD ON PAGE 24

70 Counselor Realty Pat Boen
3995 Pikie Point Drive
Longville, MN 56655
218-838-4202
pat@patboen.com
www.patboen.com
-SEE AD ON PAGE 25

35 LakePlace.com Annie Gielarowski
1403 Co Rd 5 • PO Box 275
Longville MN 56655
218-363-6600
annie@lakeplace.com

37 Moran Realty Patrick Moran
5033 State Hwy, 84 N • PO Box 393
Longville, MN 56655
218-363-2240 • Fax: 218-363-3199
moran@eot.com
www.moranrealty.com
-SEE AD ON PAGE 25

MONUMENTS/ LANDSCAPING

23 Northland Monument Nathan Lange
2601 State Hwy 200 NE
PO Box 381
Longville, MN 56655
218-566-1324
nathan@northlandmonument.com
www.northlandmonument.com
-SEE AD ON PAGE 22

PRINTING

24 Arrow Printing Inc. 1375 Washington Ave S
Bemidji, MN 56601 • 218-751-1564
www.arrowprintinginc.com
-SEE AD ON PAGE 4

PROPANE

10 Ferrellgas Brian Gandy
1802 NW 3rd St
Grand Rapids, MN 5574
888-337-7355
www.ferrellgas.com

REAL ESTATE

34 Bill Hansen Realty Bill Hansen
5016 State Hwy 84 • PO Box 387
Longville, MN 56655 • 218-363-2306
long@billhansenrealty.com
www.BillHansenRealty.com
-SEE AD ON PAGE 9

RV SALES & SERVICE

25 Wolske RV Nate Wolske
2108 State 200 NE
Boy River MN 56672
218-363-2037
wolskerv@hotmail.com
www.wolskerv.com
-SEE AD ON PAGE 4

SHOPPING

39 Gallery of New Creations & Antiques Too Terry & Lori Daudt
1480 Cty Rd 5 • PO Box 384
Longville, MN 56655
218-363-3160 • tld@arvig.net

65 Lazy Days Erica Maske
1476 County 5
Longville, MN 56655
218-851-5406
lazydays.longville@yahoo.com
-SEE AD ON PAGE 6

UTILITIES/SERVICES

26 City Sanitary Service Michele Ihrke
PO Box 218
Walker, MN 56484
218-547-3633 • Fax: 218-224-4083
mmihrke@hotmail.com

27 Crow Wing Power Char Kinzer
PO Box 507 • Brainerd, MN 56401
218-829-2827 or 800-648-9401
www.cwpower.com

31 Northland Septic Maintenance Inc. Rick Smith
4207 16th St. NW
Backus, MN 56435
218-947-4999 • 888-454-4999
northlandseptic@tds.net
www.northlandseptic.com



STUDIO 5
on Main

Apparel • Unique Jewelry

Phyllis Eck
Owner

P.O. Box 48, 1479 County Road 5
Longville, MN 56655
(218) 363-2622 fax: (218) 363-0222

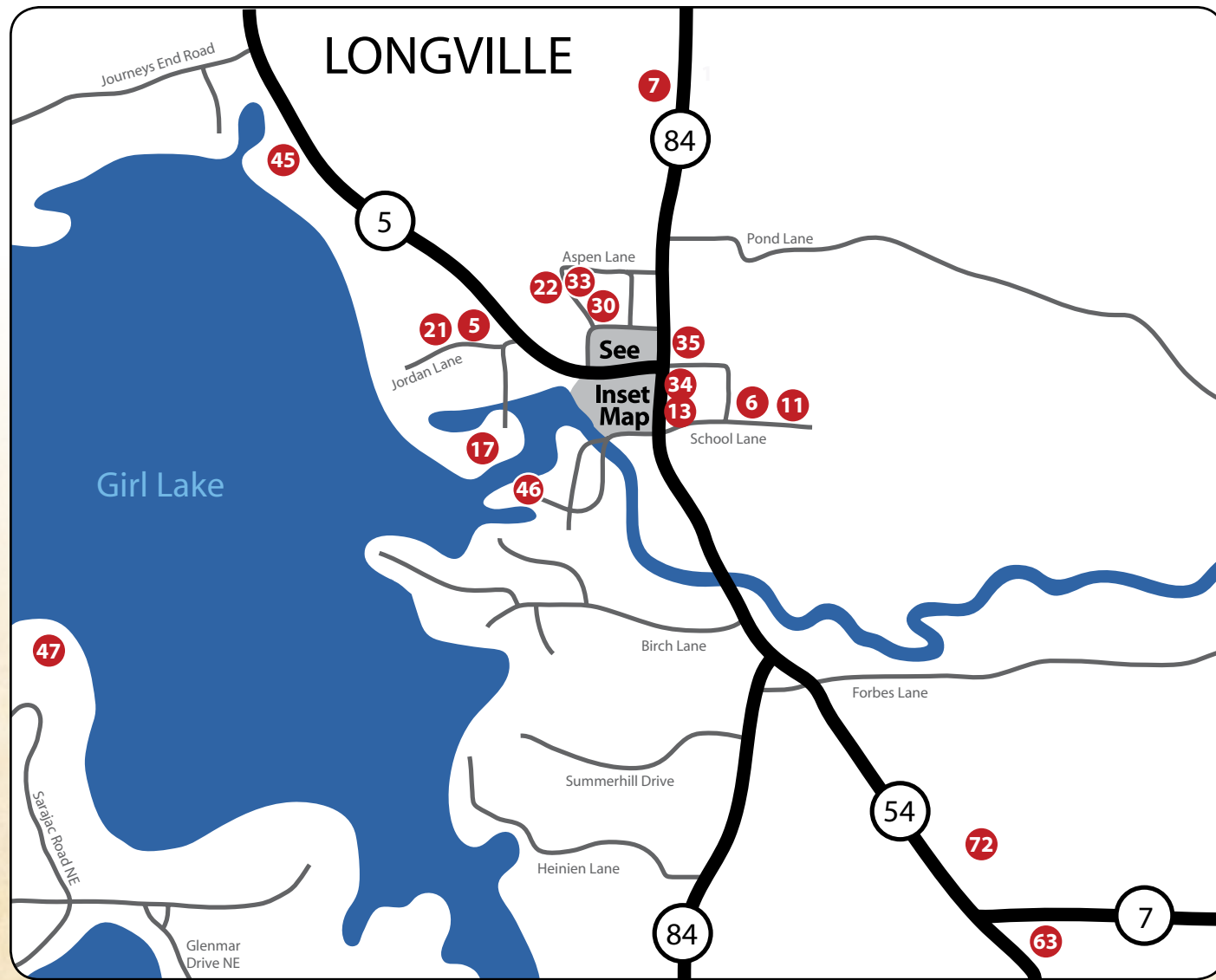
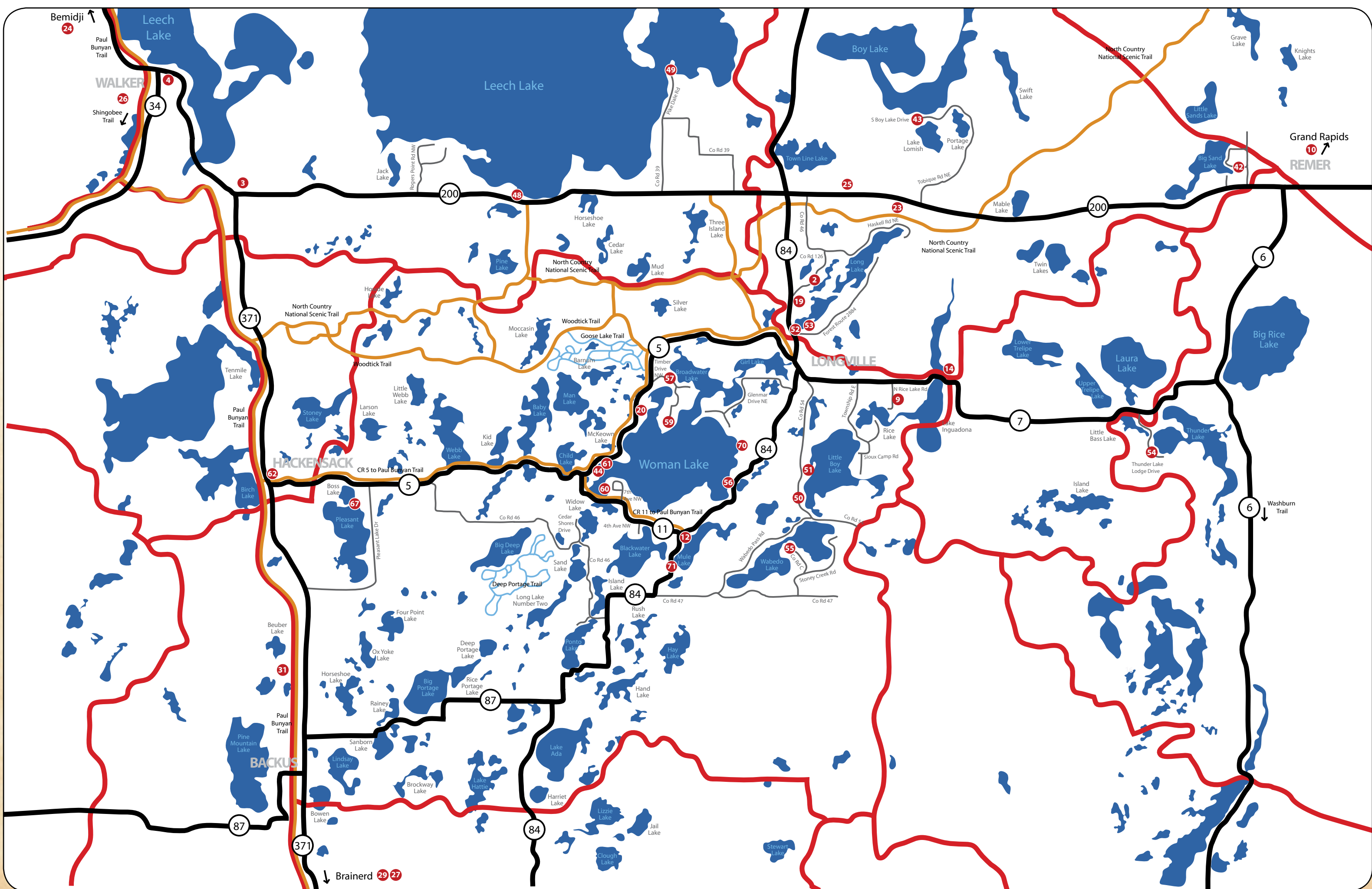
Tabaka's Family Foods

Downtown Longville
Fresh Deli • Fresh Produce
Bakery • Fresh Meats •

Weekly Specials

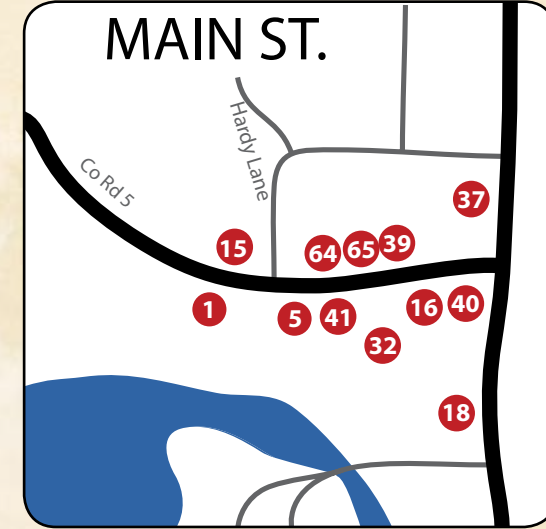
Summer Hours:
8-7 Mon-Sat 9-6 Sunday

Watch for coupons in Pine Cone Press Citizen.



Legend

- Biking/Hiking Trails
- Snowmobile Trails
- Cross Country Ski Trails
- Business



Longville Lakes Area Chamber of Commerce
 800.756.7583 • 218.363.2630
www.longville.com • chamber@longville.com
 P.O. Box 33 • Longville, MN 56655